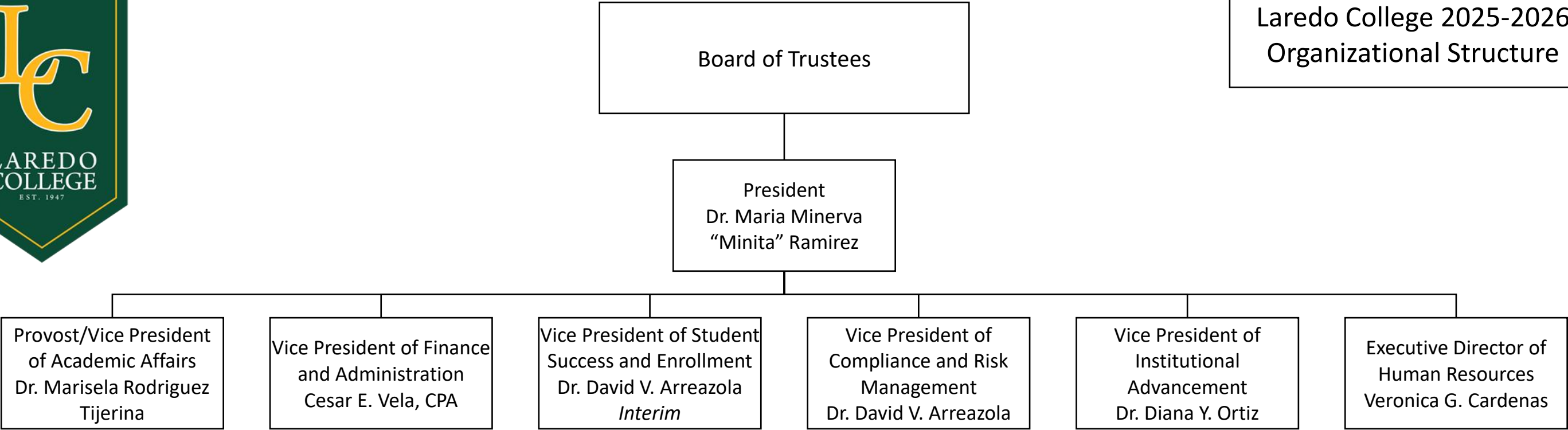


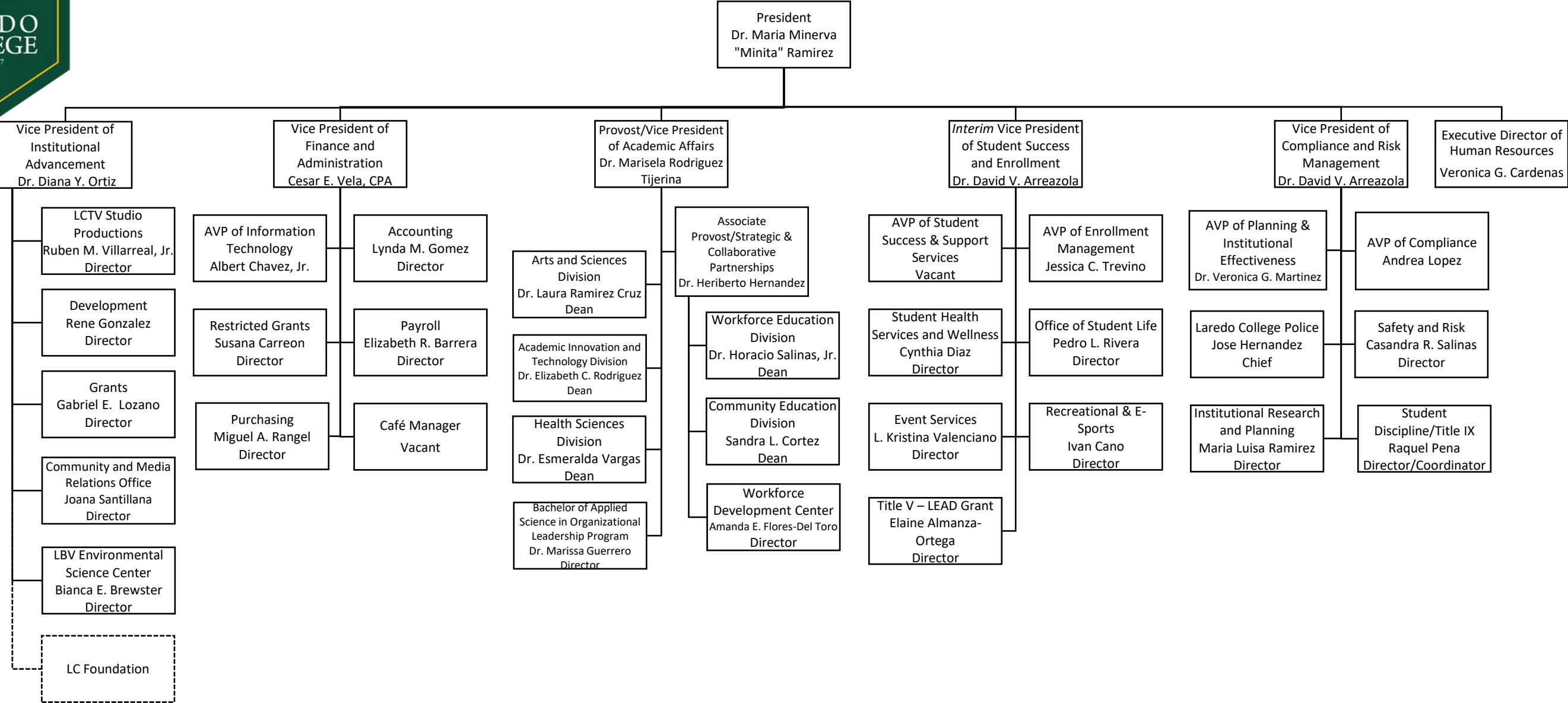


Laredo College 2025-2026  
Organizational Structure





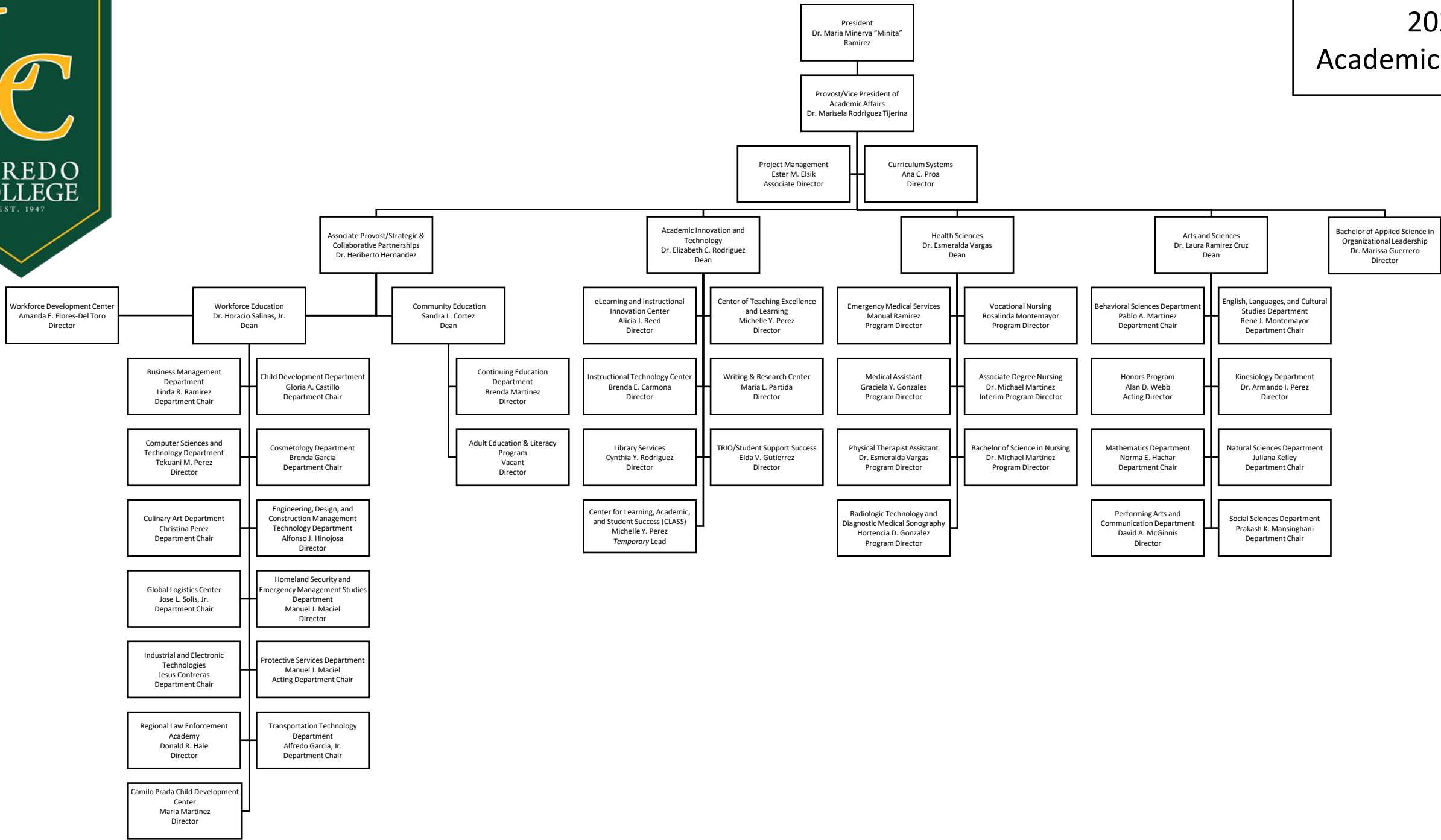
Laredo College 2025-2026  
Organizational Structure





2025-2026

Academic Affairs Division





2025-2026  
Student Success and  
Enrollment Division

President  
Dr. Maria Minerva  
“Minita” Ramirez

*Interim* Vice President of  
Student Success and  
Enrollment  
Dr. David V. Arreazola

Associate Vice President  
of Enrollment  
Management  
Jessica C. Treviño

Associate Vice President  
of Student Success &  
Support Services  
Vacant

Event Services  
L. Kristina Valenciano  
Director

Recreational & Esports  
Ivan Cano  
Director

Student Health Services  
and Wellness  
Cynthia Diaz  
Director

Student Life  
Pedro L. Rivera  
Director

Title V – LEAD Grant  
Elaine Almanza-Ortega  
Director

Admissions  
Jorge A. Dimas  
Director

Assessment Center  
Dimitri G. Garcia  
Director

Advising Center  
Rebeka L. Herrera  
Director

Disability Services  
Adriana L. Craddock  
Director

Bursar  
Norma A. Cano-  
Sifuentes

Customer Relations  
Management (CMR)  
Vacant  
Coordinator

Retention Services  
Fabiola Rodriguez  
Director

Title III – LEAPS STEM  
Rosemary Aguero  
Project Director

Enrollment Systems  
Vacant  
Director

Financial Aid  
Steven Aguilar  
Director

Upward Bound  
Cecilia I. Salinas  
Director

Recruitment and Dual  
Enrollment  
Julio Reyes, Jr.  
Director

Registrar  
Roberto D. Solis  
College Registrar  
*Associate/Interim*

Scholarship Coordinator  
Brenda Y. Diaz

Veteran Services  
Albert Hernandez  
Director

Case Manager  
Sylvia Trevino

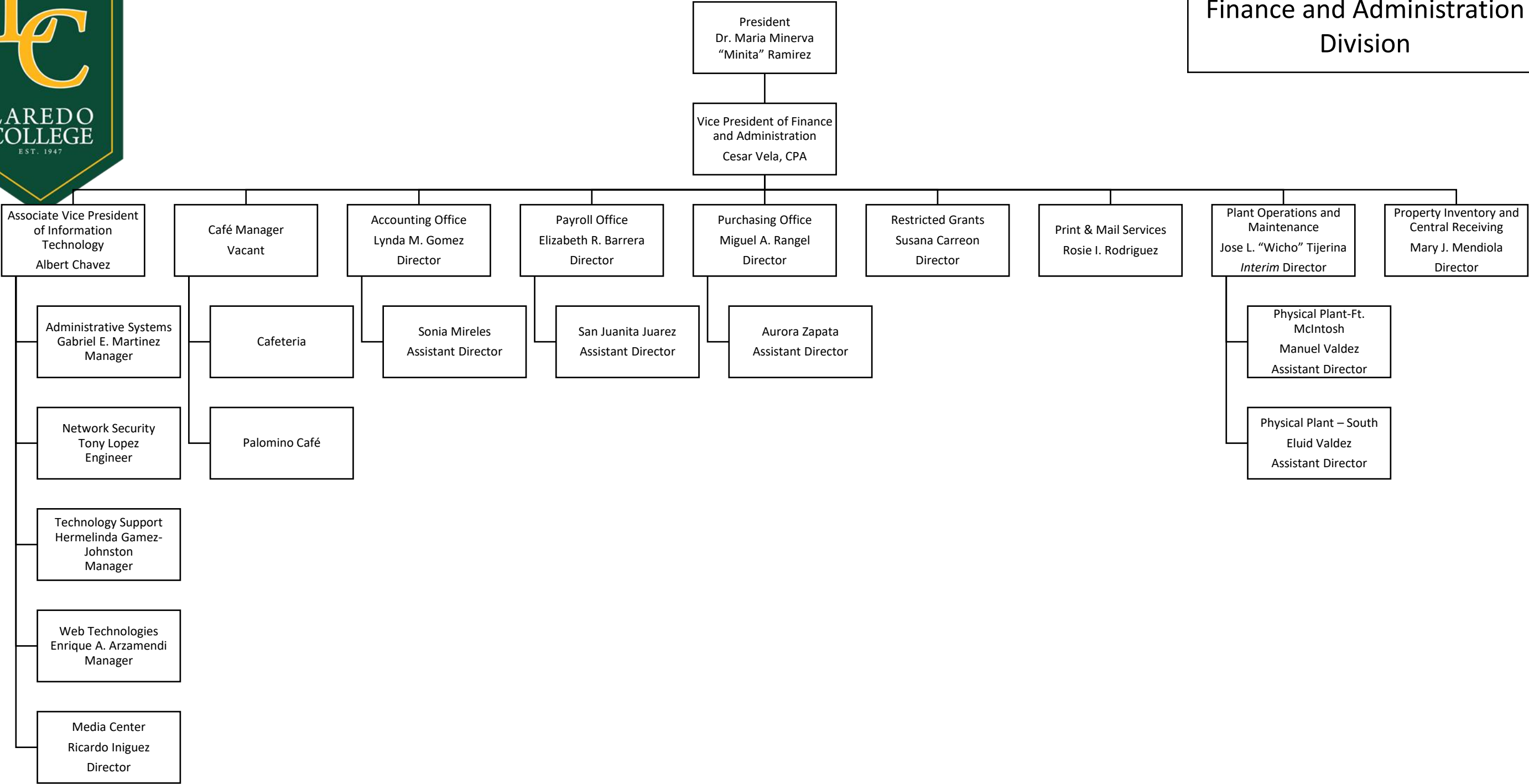
Counselor  
Mary C. Sosa

Case Manager  
South Campus  
Lisa L. Romo

Nurse  
South Campus  
Alejandra Buentello



2025-2026  
Finance and Administration  
Division





2025-2026  
Compliance and Risk  
Management Division

